

T2.5 TIMING PULLEYS

METRIC TIMING PULLEY

2.5 mm Pitch

For 6 mm Wide Belts

Hub

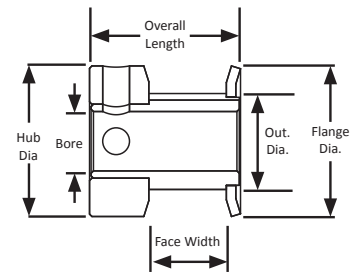
Aluminum Flanges

Aluminum

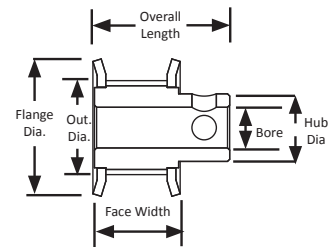


Part Number	No. of Teeth	Type	Pitch Dia. (mm)	Out. Dia. (mm)	Flange Dia. (mm)	Bore (mm)	Face Width (mm)	Overall Length (mm)	Hub Dia. (mm)	Set Screw
16T2.5/12-2	12	6C	9.6	9.0	13.0	3.0	10.0	16.0	13.0	1 x M2
16T2.5/14-2	14	6C	11.2	10.6	14.7	3.0	10.0	16.0	15.0	1 x M2
16T2.5/15-2	15	6C	12.0	11.4	14.7	3.0	10.0	16.0	15.0	1 x M2
16T2.5/16-2	16	6C	12.8	12.2	16.1	3.0	10.0	16.0	16.0	1 x M2
16T2.5/18-2	18	6F	14.4	13.8	17.4	4.0	10.0	16.0	9.0	2 x M2 @ 90°
16T2.5/19-2	19	6F	15.2	14.6	18.0	4.0	10.0	16.0	10.0	2 x M2 @ 90°
16T2.5/20-2	20	6F	16.0	15.4	20.1	4.0	10.0	16.0	11.0	2 x M2 @ 90°
16T2.5/22-2	22	6F	17.6	17.0	23.0	4.0	10.0	16.0	11.0	2 x M2 @ 90°
16T2.5/24-2	24	6F	19.2	18.6	22.7	4.0	10.0	16.0	12.0	2 x M2 @ 90°
16T2.5/25-2	25	6F	20.0	19.4	24.0	4.0	10.0	16.0	13.0	2 x M2 @ 90°
16T2.5/26-2	26	6F	20.8	20.2	25.4	4.0	10.0	16.0	14.0	2 x M2 @ 90°
16T2.5/28-2	28	6F	22.4	21.8	25.4	4.0	10.0	16.0	14.0	2 x M2 @ 90°
16T2.5/30-2	30	6F	24.0	23.4	26.0	6.0	10.0	16.0	16.0	2 x M3 @ 90°
16T2.5/32-2	32	6F	25.6	25.0	32.0	6.0	10.0	16.0	16.0	2 x M3 @ 90°
16T2.5/36-2	36	6F	28.8	28.2	36.1	6.0	10.0	16.0	20.0	2 x M3 @ 90°
16T2.5/40-2	40	6F	31.9	31.3	37.3	6.0	10.0	16.0	22.0	2 x M3 @ 90°
16T2.5/44-0	44	6	35.1	34.5	-	6.0	10.0	16.0	24.0	-
16T2.5/48-0	48	6	38.3	37.7	-	6.0	10.0	16.0	26.0	-
16T2.5/60-0	60	6	47.9	47.3	-	8.0	10.0	16.0	34.0	-

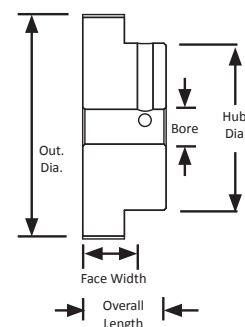
TYPE 6C



TYPE 6F

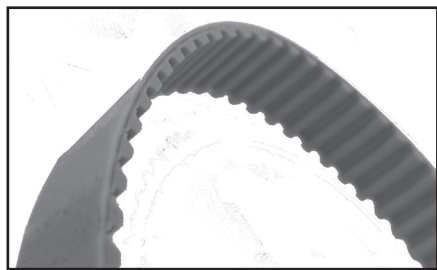


TYPE 6



The T2.5 pitch is a metric pitch tooth profile and is trapezoidal in shape. T2.5 pitch pulley part numbers can tell you a great deal about the pulley including the number of teeth, pitch, overall length, and number of flanges.

For more information on part numbers and their meaning, see page 441.



For matching T2.5 pitch belts, see page 205.